

7 Parental Controls

Parental controls enable you to control whether the members of your household can view certain kinds of broadcast TV programs. When a program or feature is blocked, you can unblock it by entering a parental control PIN that only you know.

! Note:

Parental controls block content from the TV tuner and from streaming options, if any, on the Home screen menu. Parental controls do not block content on other TV inputs or content from streaming channels you add to your TV.

Creating a parental control PIN

To create a new parental control PIN, from the Home screen menu navigate to **Settings > Parental controls**. The screen displays a numeric keypad. Use the purple directional pad to enter a four-digit code, and then press **OK**. Then repeat the process to enter the same PIN again, just to make sure you correctly entered the PIN you want to use.

! Important:

If you forget your parental control PIN, the only way to recover is to perform a factory reset operation.

Blocking broadcast TV programs

Enabling parental control of TV programs

The first step in blocking TV programs is to enable parental control of TV programs.

To enable parental control of TV programs:

1. In the Home screen menu, navigate to **Settings > Parental controls**, and then enter your parental control PIN.
2. In the **Parental controls** screen, navigate to **TV tuner > Parental control of TV shows**.
3. Make sure the check box next to **Enable parental controls** is checked. If not, highlight it and press **OK**.

Blocking based on USTV ratings

To block TV programs based on US television ratings:

1. From the Home screen menu, navigate to **Settings > Parental controls**, and then enter your parental control PIN.
2. In the **Parental controls** screen, navigate to **TV tuner > TV ratings**. Choose among the following settings:
 - **Entire ratings** – Highlight the rating you want to block, and then navigate to the right and select the first option that blocks the entire rating level (and all higher rating levels).
 - **Individual content types** – Highlight the rating that contains the content type you want to block, and then select the content types you want to block from among those listed. Remember that blocking a content type in one rating blocks the equivalent content type in all higher rating levels.

Copyright

All other registered and unregistered trademarks are the property of their respective owners.



The terms HDMI and HDMI High-Definition Multimedia Interface, and the HDMI Logo are trademarks or registered trademarks of HDMI Licensing Administrator, Inc. in the United States and other countries.



Manufactured under license from Dolby Laboratories. Dolby, Dolby Audio, and the double-D symbol are trademarks of Dolby Laboratories Licensing Corporation.

Portions of this software are copyright © The FreeType Project (www.freetype.org).

The American Academy of Pediatrics discourages television viewing for children younger than two years of age.

© 2021 Funai Electric Co., Ltd. All rights reserved.

No part of this owner's manual may be reproduced, transmitted, disseminated or transcribed, in any form or for any purpose without the express prior written consent of Funai Corporation.

Furthermore, any unauthorized commercial distribution of this owner's manual or any revision hereto is strictly prohibited.

8 Troubleshooting

Category	Problem	Tip
Power	No power	<ul style="list-style-type: none">• Ensure that the AC outlet supplies the proper voltage. Plug another electrical appliance into the AC outlet to ensure that the AC outlet operates normally.• If a power failure occurs, unplug the AC power cord for 1 minute to allow the unit to reset itself.
Remote	Remote buttons are not functional.	<ul style="list-style-type: none">• Re-insert or replace the AAA batteries with their polarities (+/-) as indicated on the remote battery area.
Network	Cannot connect the network.	<ul style="list-style-type: none">• Check if your router and/or modem is properly connected.• Check if the Ethernet cable connection between the TV and your router or modem is properly secured.• Power cycle the router and/or modem.• Check your network settings.
	Slow Data Connection or buffering.	<ul style="list-style-type: none">• Check the settings between your router and ISP modem or gateway (if applicable).• Connect to a stable wireless connection from home wireless or wired network.• The use of mobile hot spots or public wireless connections is not recommended.
Picture on HDMI Input	Television has sound with no picture or abnormal picture.	<ul style="list-style-type: none">• HDMI EDID Version setting is set to a different mode than your source device.• Change the resolution output of your source device.
Sound on HDMI with external devices	Television has no sound.	<ul style="list-style-type: none">• Please check to be sure the device is connected to the HDMI 2 (ARC) input on the TV.

SANYO • **Roku TV**



FW65R70F
FW65R79FC
FW55R70F
FW50R71F

Product design is for illustrative purposes only. Actual product may vary.

Quick start guide

If you have any questions or need a detailed manual, please visit our support website at

www.sanyo-av.com

Chat with us:

Scan to chat with us:

<https://tinyurl.com/y3ykk54s>



Need help connecting this LEDTV? Call Us at 1 866 212 0436

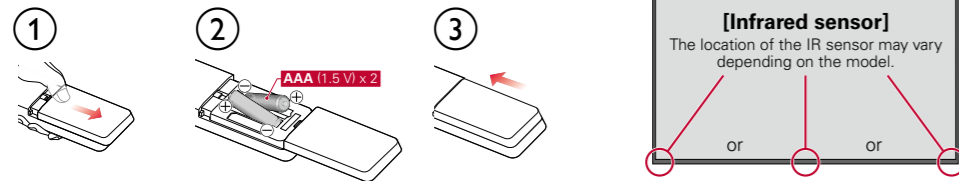
Model : _____

Serial : _____

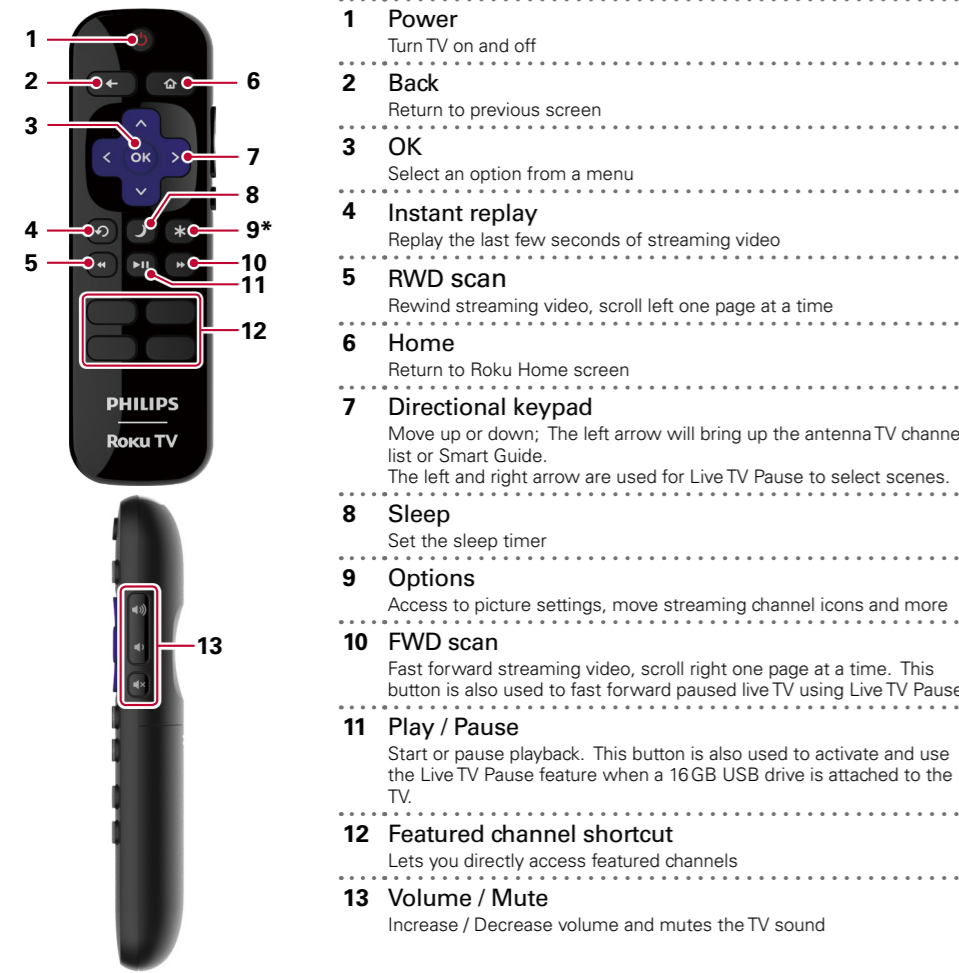
SANYO is a registered trademark of SANYO Electric Co., Ltd. and is used by Funai Electric Co., Ltd. and Funai Corporation, Inc. under license from SANYO Electric Co., Ltd.

1 Using the remote

Power your TV remote by inserting the batteries carefully matching (+) and (-) indicated inside the battery compartment. If your remote gets warm / hot during use, discontinue use and contact customer support immediately at www.sanyo-av.com



This remote control is designed to be incredibly intuitive for watching TV and navigating on-screen menus. **Here are some buttons** you should know about.



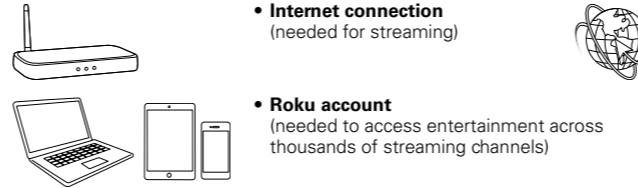
- 1 Power**
Turn TV on and off
- 2 Back**
Return to previous screen
- 3 OK**
Select an option from a menu
- 4 Instant replay**
Replay the last few seconds of streaming video
- 5 RWD scan**
Rewind streaming video, scroll left one page at a time
- 6 Home**
Return to Roku Home screen
- 7 Directional keypad**
Move up or down; The left arrow will bring up the antenna TV channel list or Smart Guide. The left and right arrow are used for Live TV Pause to select scenes.
- 8 Sleep**
Set the sleep timer
- 9 Options**
Access to picture settings, move streaming channel icons and more
- 10 FWD scan**
Fast forward streaming video, scroll right one page at a time. This button is also used to fast forward paused live TV using Live TV Pause.
- 11 Play / Pause**
Start or pause playback. This button is also used to activate and use the Live TV Pause feature when a 16 GB USB drive is attached to the TV.
- 12 Featured channel shortcut**
Lets you directly access featured channels
- 13 Volume / Mute**
Increase / Decrease volume and mutes the TV sound

* The ***** gives you easy access to picture settings, display options and more. Try it on every screen.

2 Prepare to activate your smart TV

What you need (not included)

- **Wireless router** (needed to connect your TV to the Internet)
- **Internet connection** (needed for streaming)
- **Computer, tablet, or smartphone** (needed for setup)
- **Roku account** (needed to access entertainment across thousands of streaming channels)



For additional support, please see online owner's manual at www.sanyo-av.com
Key things to know: A paid subscription or other payments may be required for some streaming channel content. Channel availability is subject to change and varies by country.

Your Roku account

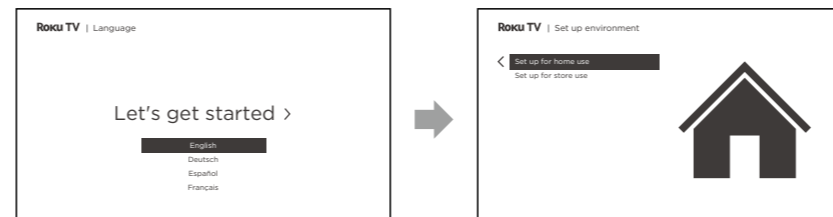
- During guided setup, you will be prompted to create your Roku account online. See more information below.
- Roku accounts are free, and while a valid credit card number is not required to create your account, providing your credit card information makes renting and purchasing entertainment from the Roku Channel Store fast and convenient.
 - If you choose to save a payment method, you will be able to seamlessly rent content and subscribe to services without having to enter your credit card information each time.
 - A unique PIN can be added to the account to prevent unauthorized purchases.

Tip: Roku does not charge for activation support – **beware of scams.**

3 Plug in and turn on TV

Connect the AC power cord to the AC outlet. Press the power button on the TV's remote.

4 Follow the on-screen instructions



1. Once your Roku TV powers on, follow the on-screen instructions. Your Roku TV will walk you through initial setup and help connect to your preferred wireless network.
2. Your TV will automatically detect wireless networks in your area. Have your network name and password handy and follow the easy on-screen instructions.
3. Once you complete guided setup, your TV will automatically update with the latest software. This can take a few minutes to update.

Your new SANYO Roku TV automatically receives regular software updates in the background when it's connected to the Internet. This allows it to give you a better and better experience over time.

5 Download the Roku mobile app (optional)

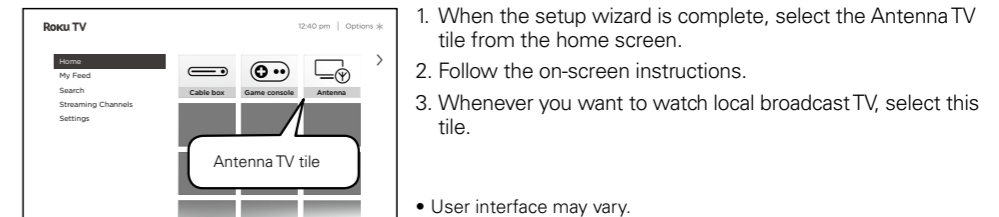
The free Roku mobile app allows you to use your mobile device as a fully functioning remote with voice search and keyboard.

- Download the Roku mobile app on your smartphone or tablet through Google Play or Apple App Store.
- Simply search for "Roku app" and choose the "Roku" app provided by Roku Inc.
- Follow the on-screen prompts and you are on your way.

Caution: Funai Corporation Inc. does not warrant access to the portal or to any of the services, content, software and advertising. Funai Corporation Inc. may, in its sole discretion, add or remove access to any specific services, content, software and advertising at any time. Although Funai Corporation Inc. will strive to provide a good selection of services, content or software, Funai Corporation Inc. does not warrant continued access to any specific services, and content or software. Funai Corporation Inc. does not warrant Wireless Screencasting compatibility with all source devices such as smartphones, tablets, laptops, etc. due to large variability in hardware, firmware, drivers, software and implementation of wireless casting applications on these source devices. Although Funai Corporation Inc. will strive to enhance compatibility and performance across a range of source devices, Funai Corporation Inc. does not warrant compatibility with specific source devices.

6 Connect antenna or cable (optional)

With the tuner built-in you can connect your TV to antenna or cable (free cable only, does not work with cable TV using a set-top box) and enjoy over-the-air entertainment.



- Tip:** While in the antenna TV input, you can use your remote to access additional features.
- D-Pad left: Pressing this key brings up the smart guide, a list of antenna TV channels.
 - Play/Pause: Pause live TV for up to 90 minutes when a 16 GB USB drive is connected.
 - RWD scan and FWD scan: Allows you to fast forward and rewind while using the Live TV Pause feature.
 - D-Pad left and right: Allows you to scroll through the paused Live TV and select scenes.

For complete instructions, please visit www.sanyo-av.com to download the full version of the User manual. This product has been manufactured by and is sold under the responsibility of Funai Corporation Inc., and Funai Corporation Inc. is the warrantor in relation to this product. Roku, Roku TV and the Roku logo are the trademarks or registered trademarks of Roku, Inc. All other trademarks and logos herein are the property of their respective owners.

Any liability related to SANYO products, including design and quality, is the sole responsibility of Funai Electric Co., Ltd. and Funai Corporation, Inc. Please contact Funai Corporation, Inc. for any questions or claims related to SANYO products: www.sanyo-av.com

Specifications are subject to change without prior notice.
© 2021 Funai Electric Co., Ltd.

SANYO • Roku TV