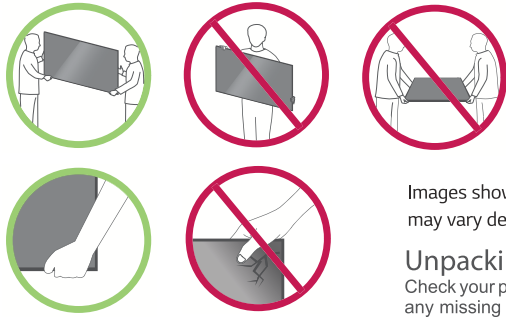


NANO91\*

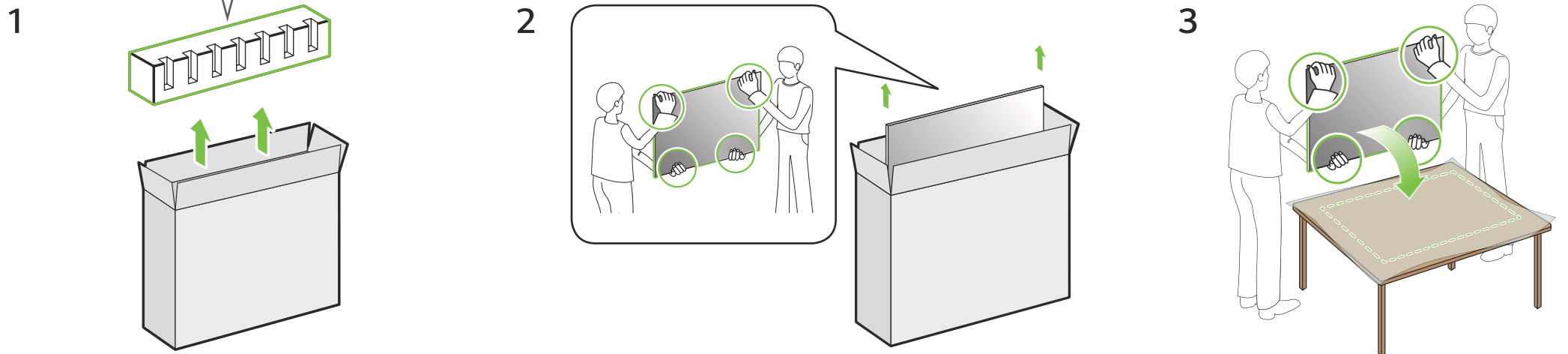
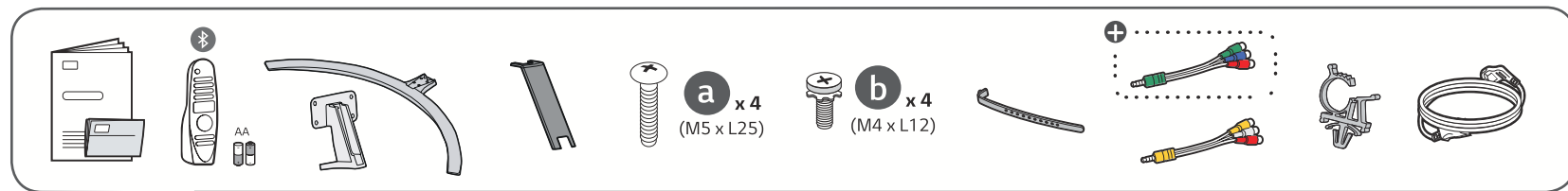
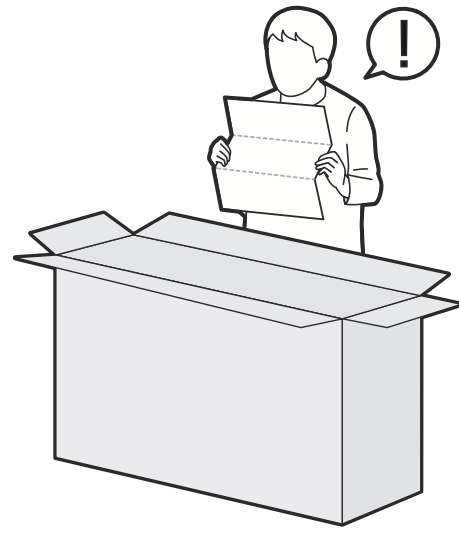
# Quick Start Guide



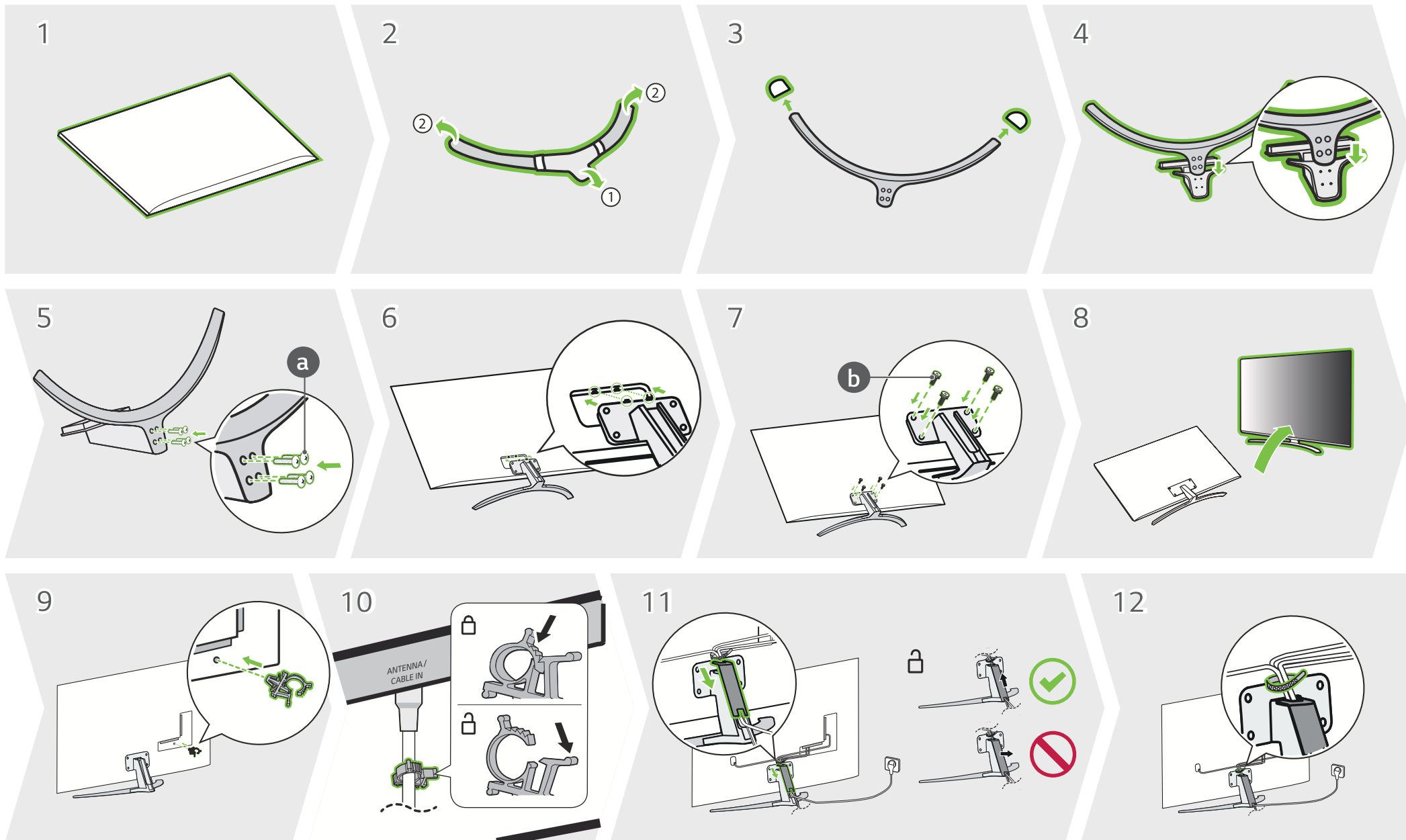
Images shown in manual  
may vary depending on model

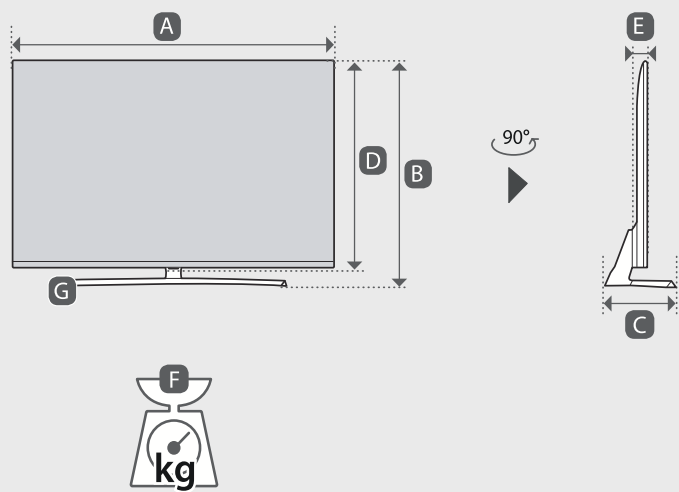
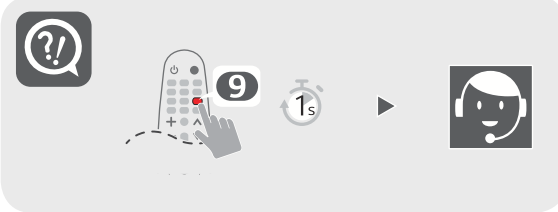
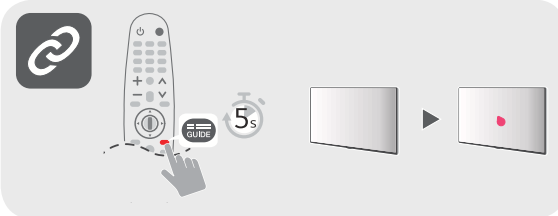
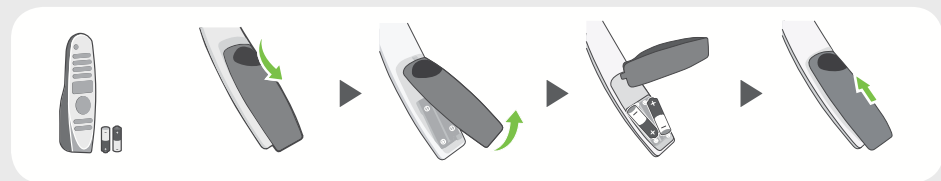
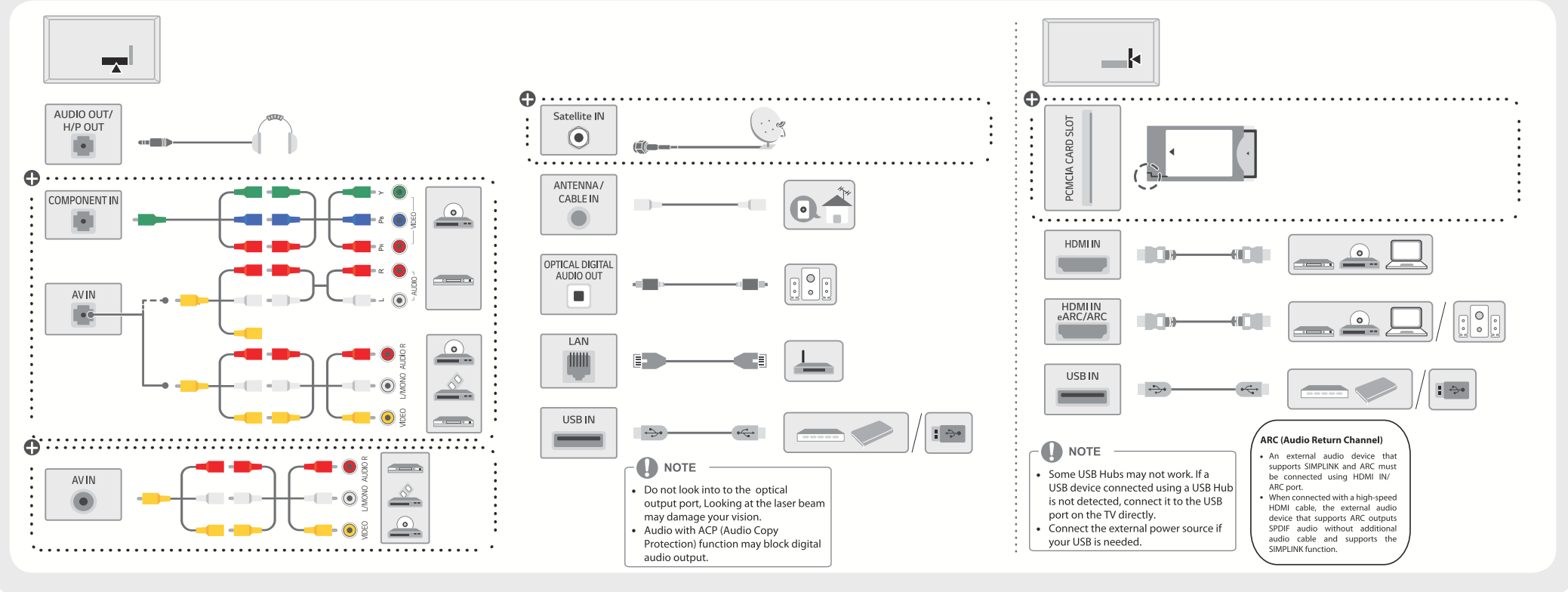
## Unpacking

Check your product box for the following items. If there are any missing accessories, contact the local dealer where you purchased your product. The illustrations in this manual may differ from the actual product and item.



**CAUTION**  
Image shown may differ from your TV  
When attaching the stand to the TV set, place the screen facing down on a cushioned table or flat surface to protect the screen from scratches.





	A	B	C	D	E	F	F-G
	(mm)					(kg)	
55NANO91TNA 55NANO91VNA	1237	786	263	716	70.5	18.6	17.1
Power requirement	AC 100-240 V - 50 / 60 Hz						



### English

- Read **Safety and Reference**.
- For the power supply and power consumption, refer to the label attached to the product.

⊕ : Depending on model