



GOBUDS 600

True Wireless Earbuds

Get ready for MORE, for a LIFE of WOW with your all new GOBUDS 600. We strongly recommend you go through this manual entirely before beginning to use the product, as it contains important technical information to ensure a seamless audio experience. It can also be referred to in times of difficulty.

PACKAGE CONTENTS

- 1 x GOBUDS 600
- 1 x Type C Charging Cable
- 1 x Warranty Card
- 1x Charging case
- 1 x Manual
- 2x Additional Ear Muffs

CHARGING

- Earbuds are partially charged, Please ensure you fully charge them before you use them for the first time.
- To charge the case, plug one of the charging cables into the case and the other end into the Type-C Port.
- White lights indicate that the charging case is being charged. Once the Charging case fully Charged, four white lights will turn on.

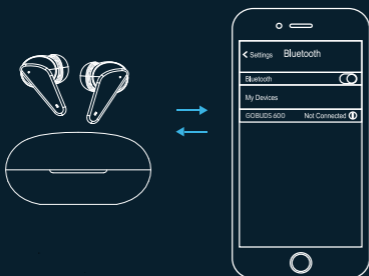
Note: The LED lights located on the charging case indicate the battery status of the case.

Charge the earphones at least once month when they are not in use for a long time.

PAIRING DEVICE

Follow these steps for a successful pairing :

- After opening the cover of the charging case the earbuds are automatically turned on and paired with each other.
- Select from the list of the available bluetooth devices the GOBUDS 600, while keeping the earbuds close to your device.
- Earbuds indicator will flash with red and blue light to indicate a successful connection.
- GOBUDS 600 will automatically be connected to the paired device, every time you remove earbuds from the charging case.



HOW TO USE

Power On	Touch and hold the left or right MFB for 4 seconds
Power Off	Touch and hold the left or right MFB for 5 seconds
Answer call	Touch the Left or Right MFB button once
End call	Touch the Left or Right MFB button once
Reject call	Touch the Left or Right MFB button for 2 sec
Music play/pause	Touch the Left or Right MFB button once
Previous song	Touch the left MFB button 2 times
Next song	Touch the right MFB button 2 times
Voice assistant	Hold L/R MFB 2 seconds to activate Voice assistant
Game Mode On/Off	Touch the L/R MFB 3 times to activate Game mode

Note: The volume cannot be controlled via the earbuds. You may control the volume via the phone or media device

Reset:

Take out the earbuds and Touch the Left and right MFB 5 times quickly.

SPECIFICATION

Model	GOBUDS 600
Driver size	7mm
Frequency Range	20Hz-20kHz
Sensitivity	105dB±3dB
ENC	Environment Noise Cancellation
Case Battery Capacity	480mAh
Earbuds Battery Capacity	3.7V/40mAh
Total Playtime	40 Hours
Earbud Playtime	7 Hours
Standby Time	100 Hours
Fast Charge	180 mins playtime with 10 mins charge
Full Charge	60 Mintues
Charging Port	Type C
Input Voltage	5VDC, 1A
Water Resistance	IPX5
Bluetooth	V5.3
Transmission Dist.	10m



Multi Function Button

MONO MODE

- Both earbuds can be used in Mono mode. More specifically, you can remove from the case either earbud and it will be paired automatically to the previous device.
- To switch between the earbuds, You can put the initial earbud on the case. Then put the second earbud out, and it will automatically pair.

Notes: To switch to mono mode, simply take out the other earbud from the case. It will automatically power on and pair with the previously used earbud, hence enabling stereo usage.

You cannot skip tracks or return to the previous tracks in Mono mode

SAFETY INSTRUCTIONS

- 1 Please read, follow and keep these instructions. Heed all warnings on the product and in the instructions for use.
- 2 Stop using this product immediately if it causes discomfort or pain. When using this product, it is recommended that you limit the volume to help avoid causing harm to your ears and danger resulting from being unable to hear what is going on around you.
- 3 Keep the device out of extreme heat and humidity. Do not use the device near water, such as sinks, bathtubs, swimming pools, washing machines, tubs of water, etc.
- 4 Observe all signs and instructions that require an electrical device or radio product to be switched off in designated areas, such as petrol/refueling stations, hospitals, blasting areas, potentially explosive atmospheres, and aircraft.
- 5 Using earphones while driving can distract you and increase the likelihood of an accident. If driving conditions demand it (such as bad weather, high traffic density, presence of children in the car, difficult road conditions), pull off the road and park before making or answering calls.
- 6 Battery life may differ depending on personal habits.
- 7 Please do not rotate the headset when the head band has been set/pushed to the lowest position.
- 8 This appliance should be used in moderate climates.

WARNING

- To prevent potential hearing damage, do not listen to high volume levels for long periods.
- Do not turn the volume up too high; doctors warn against prolonged exposure to high volumes.
- Stop using the product or lower the volume if you feel your ears ringing. Prolonged listening at high volumes could lead to hearing damage.

Life's too short for "ok". Too short to have stuff in our lives that's "ok, I guess". "But-I'm-almost-home!" battery life. "But-it-only-fell-off-the-table" build quality. "Has-someone-stolen-the-bass?" sound quality.

We say NO to "ok". In 2021, we set out to make stuff that's better in little ways that make a big difference.

Stuff for people who expect more. Who want the songs to keep playing until they're home. Who are on a mission to stay up all night. Who want to know they'll feel great and look awesome, every day.

For people who want every day to be a 'WoW' day.