

FILL A ROOM WITH
SUPERIOR STEREO SOUND.

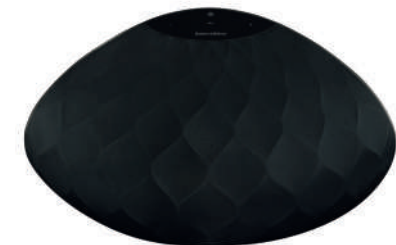
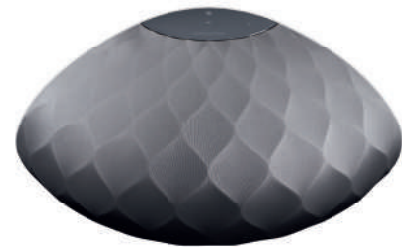


Bowers & Wilkins



FORMATION **WEDGE**

With Bowers & Wilkins Formation Wedge, experience legendary, room-filling Bowers & Wilkins audio quality, married with purposeful design that is meant to please the eyes as well as the ears. True to our heritage of uncompromising sound quality, the unique 120-degree elliptical speaker shape was created to hold a full-range of high frequency, midrange and subwoofer components for a true stereo effect, with calculated, angled drivers so sound reaches every part of a room. Stream in 96/24 quality and sync easily with other Formation speakers for a complete high-fidelity, multiroom set up. Formation Wedge, as part of the Formation Suite, is yet another example of how Bowers & Wilkins defines the Highest Form of Sound™.



Model	Formation Wedge
Description	Wireless Music System
Technical features	Apple® AirPlay 2® technology Spotify® Connect Room Ready Bluetooth In Digital Signal Processing (DSP) Digital amplifier Dynamic EQ
Drive units	2 x 25mm (1 in) double dome tweeter 2 x 90 mm (3.5 in) FST midrange 1 x 150mm (6 in) subwoofer
Frequency response	35Hz to 28kHz - double dome
Amplifier power output	2 x 40W (tweeter) 2 x 40W (midrange) 1 x 80W (subwoofer)
Input voltage	100V - 240V - 50/60Hz
Power consumption	Below 6 Watts (Sleep)*
Connections	Network (RJ45 Ethernet or WiFi) USB - service only
Bluetooth	Bluetooth® v4.1, Class 2 aptX HD AAC SBC
Dimensions	Height: 232mm (9.1 in) Width: 440mm (17.3 in) Depth: 243mm (9.6 in)
Weight	6.5kg (14.3 lb)
AirPlay 2 compatibility	iPhone, iPad, and iPod touch with iOS 11.4 or later, Apple TV 4K or Apple TV (4th Generation) with tv OS 11.4 or later, Mac or PC with iTunes 12.8 or later.

*Formation products create a mesh network. Each product in this network dynamically chooses the optimal path to route audio-data between products, in order to ensure a robust streaming experience. We have therefore certified Formation products for High Network Availability (HiNA) and conform to the appropriate power requirements set out in the ERP directive.