

boAt
plug into nirvana



Introduction

Thank you for choosing the boAt NIRVANAA 1007ANC. This manual is meant to guide you through shores of Nirvana without too much difficulty. Please think of this manual as your map. Knowledge of Bluetooth and device connection is essential for the steering of this boAt. Therefore, we strongly advise that this manual is thoroughly read before beginning use, and referred to when in times of difficulty.

NIRVANAA
1007 ANC

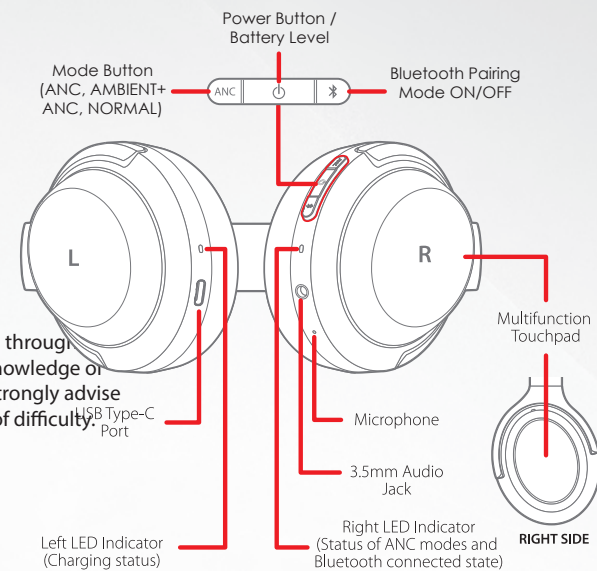
- Package Contents**
- 1 x Wireless Stereo Headphone
 - 1 x Type-C Cable
 - 1 x Airplane Adapter
 - 1 x 3.5mm Audio Cable
 - 1 x Carrying Case
 - 1 x User Manual
 - 1 x Warranty card

Functions

Power On Press and hold the Power Button to switch the headphone on, until the right earcup's LED turns into blue

Power Off Press and hold the Power Button to power off the earphones, until the right earcup's LED turns off.

Battery Level Single press the Power button to check the approx. battery level indicated by 4 different voice prompts for: 25%, 50%, 75% and 100% remaining capacity.



Bluetooth Pairing

Step 1: Switch on the headphone

Step 2: Press and hold the Bluetooth button up to 2 seconds until right earcup's LED flashes red and blue with a pairing voice prompt

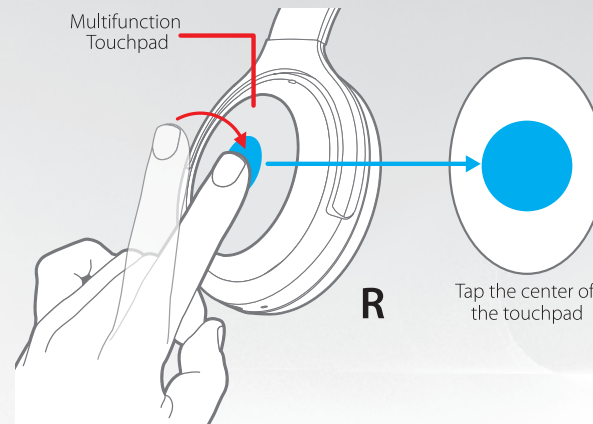
Step 3: Open your device's Bluetooth menu and search for 'Nirvanaa 1007ANC' to pair

Once paired, the right earcup's LED slowly flashes in blue every 5 second.

Disconnecting To disconnect from a device, short press the Bluetooth button

Touchpad Operation – Smart Wave Technology

Nirvanaa 1007ANC includes a multifunction touch pad control on the right earcup so that you may control the audio playback and attend calls via just your gesture, swipe or tap. This state of the art technology from boAt is called **Smart Wave Technology**.



Play/Pause Double tap the touchpad to play/pause a track.

Next Track Right swipe on the touchpad to skip to the next track.

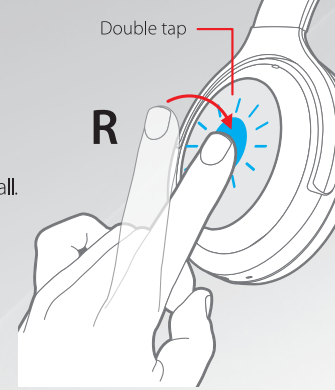
Previous Track Left swipe on the touchpad to return to the previous track.

Answer call Double tap the touchpad during an incoming call.

End call Double tap the touchpad during an ongoing call.

Reject call Double tap and hold the touchpad to reject any incoming call.

Answer a Call: Double tap quickly during an incoming call.

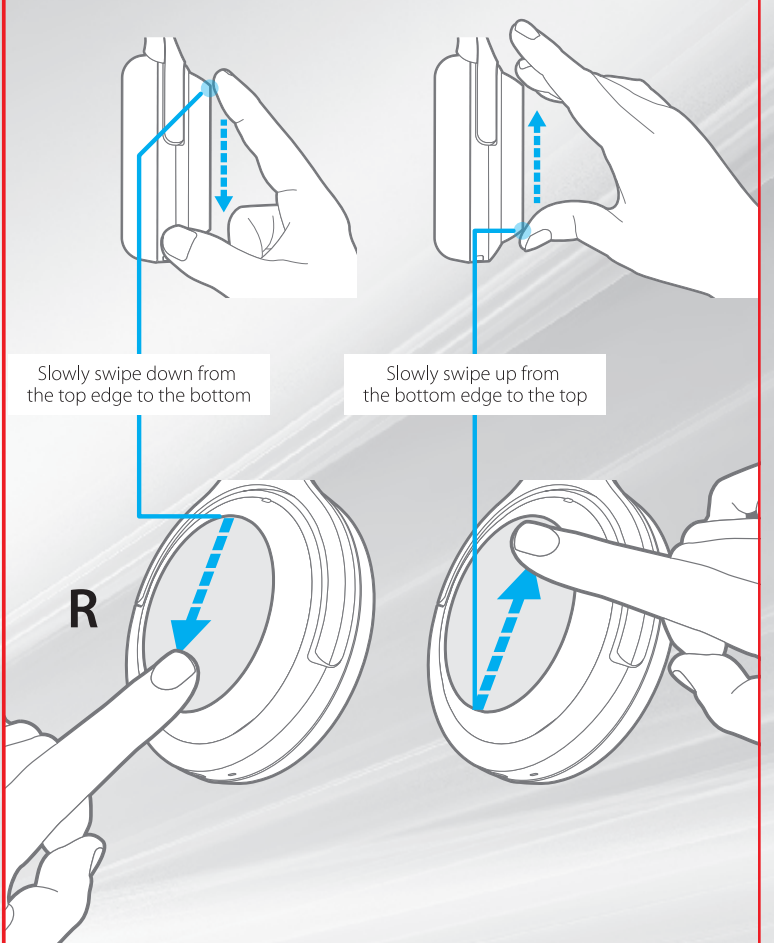


Rejecting a Call: Touch and HOLD during an incoming call.

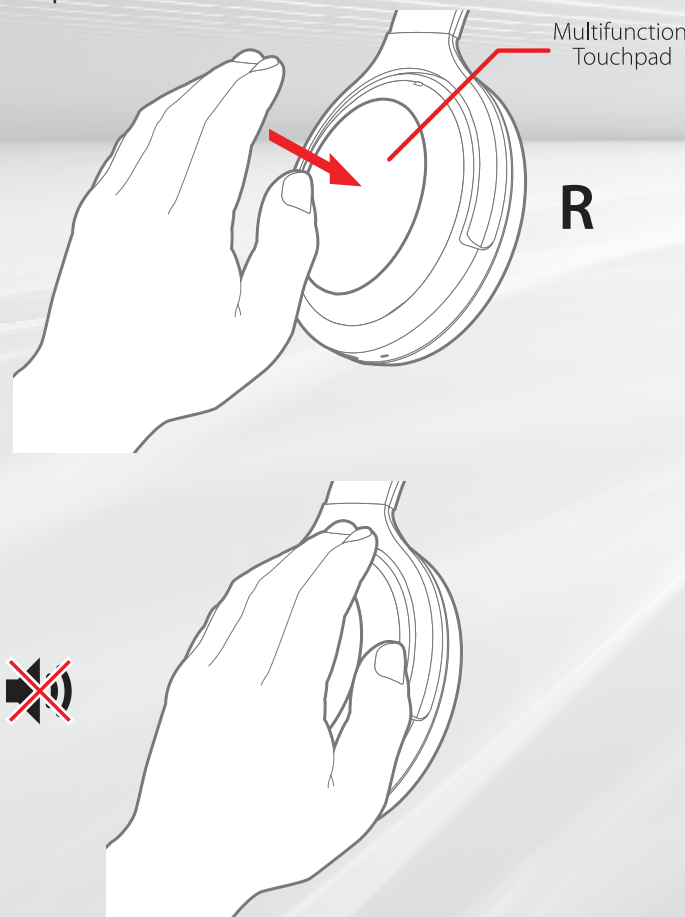


Voice Assistant: Touch and HOLD until the default voice assistant of your device is activated. You can touch and HOLD again to cancel. (This may not be supported on all devices.)

Volume Control To increase or decrease volume, place your finger at either the bottom of the right earcup as shown, and slowly swipe across to the other earcup. Note: The volume will either increase or decrease depending on where you swipe.



Smart Mute Feature Place the palm of your hand over the right earcup while the music is being played. The playback gets muted until you remove the palm from the earcup.

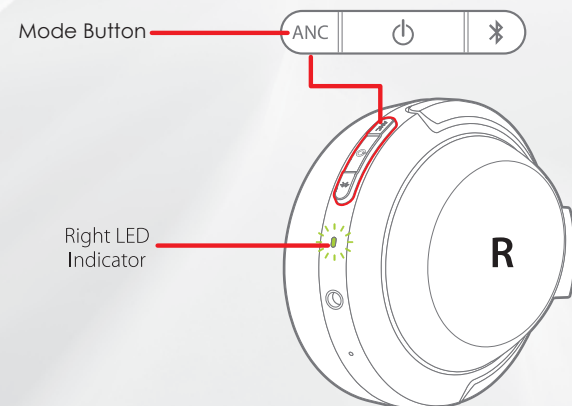


The Audio Cable When a 3.5mm audio cable is connected, the headphone plays audio directly from the connected media device.

Modes (ANC, AMBIENT SOUND+ANC, NORMAL)

The Modes offer 3 different listening experiences. Press the Mode button to cycle through the different modes as instructed below.

- 1. Active Noise Cancelling (ANC) Mode:** ANC mode is automatically activated by default when the headphone is powered on. When the ANC mode is active, the right earcup's LED turns into solid green. This mode isolates your listening experience and helps block unwanted outside noise.
- 2. Ambient Sound + ANC Mode:** This mode allows the user to listen to the sounds in the environment through the built-in microphones even during when the playback is on. It allows to hear the background noise clearer, such as important announcements. In order to enter the Ambient Sound + ANC mode, single press the Mode button. The right earcup's LED turns into solid white to indicate the same.
- 3. ANC + Ambient Sound off Mode:** In order to turn on the Normal mode, press the Mode button twice and a voice prompt 'Ambient sound and noise cancelling off' is heard. The right earcup's LED turns off to indicate the same.



Charging Insert one end of the USB Type-C cable into the Type-C port of the headphone and connect the other end to any USB charger or charging device. The left earcup's LED turns into solid red while charging, whereas it turns into solid green when the battery gets fully charged.

Note: While charging, the headphone cannot be powered on or used. The right earcup's LED flashes red twice every 5 second when the battery is low.

Charging Precautionary Guidelines:

- 1) Charger/Brick/Adapter : 5V 2A
 - 2) Cable/Wire: Standard Cable (35 strands @0.10mm diameter/ strand)
- Any other accessory can be paired up with the product as long as the specifications are as per above norms.

Bluetooth Pairing Mode	Right LED Indicator
Connected	Flashes Red and Blue
Not Connected	Slowly flashes Blue every 5 second
Not Connected	Quick flashes Blue

Modes	Right LED Indicator
Active Noise Cancelling Mode	Solid Green
Ambient Sound + ANC Mode	Solid White
Noise Cancelling and Ambient Sound Off	Off

Battery	Left LED Indicator
Low Battery	Flashes Red twice every 5 second

Charging	Left LED Indicator
Charging	Solid Red
Fully Charged	Solid Green

Specification

- Headphone Type: Bluetooth & ANC
- Driver Size: 40mm
- Bluetooth: V5.0
- THD: <5% 1KHz
- Noise Cancellation: 30db-35db
- Playtime: Up to 20 Hours (ANC mode)
- Playtime: Up to 30 Hours (nonANC mode)
- Wireless range: 10m
- Impedance: 32Ω±15%
- Frequency: 20Hz-20 KHz
- Connector: 3.5mm
- SNR: 45dB
- Weight: 250g

Safety Cautions

- Please don't dismantle the product in any way, as this can lead to a fire or electrical breakdown and completely damage the product. As this is extremely unsafe, it is advised that any maintenance or servicing of the earphones is done only through a qualified service provider/manufacturer.
- Please do not remove the battery by yourself, this is a task meant to be managed by a service provider/manufacturer. Replacing the current battery with an ill-fitting set can result in a fire or electric hazard, therefore it is strongly advised against.
- Please clean the earphones with the utmost of care with only a damp soft cloth, if cleaning is required. Please do not use any oily volatile liquid. In addition, ensure that the earphones are kept away from extremely hot or cold substances.
- Any damage to the earphones that is NOT a manufacturing issue will make the products warranty null and void. Please take the greatest care of your earphones to ensure that no such occurrences take place.
- Do not use earphones when it is unsafe to be wearing them, such as while operating a vehicle, crossing a street, or during any activity where full awareness of your surroundings is required. This is because it is dangerous to drive while wearing earphones as it decreases your ability to hear sounds like another car's horn or emergency vehicle's sirens.
- You must choose a qualified charger (Output=5V) from a regular manufacturer to charge the headphone. You must charge the earphones if it has not been used for more than 12 months.

boAt
plug into nirvana

A TOUCH OF CLASS



NIRVANAA
1007 ANC