



Table of Contents

1. What's in the box?
2. System Requirements for Headphones
3. About Headphones
4. Technical Specs
5. Quick Start
6. Remote Control Functionality
7. About Dolby Atmos® Surround Sound
8. Dolby Atmos® Minimum requirement
9. List of Games with Dolby Source Engine
10. How to activate Dolby Atmos®
11. About boAt Plugin Labz
12. How to install boAt Plugin Labz
13. Dual Microphone Functionality
14. Safety guidelines
15. Maintenance and Use

What's in the box?

- boAt IM10000 gaming headphones
- User Manual
- Warranty card

System Requirements:

- Operating Systems Windows XP/7/8/10
- One Free USB port 2.0/3.0

About Headphone

Thank you for choosing boAt IMMORTAL IM10000, 7.1 Channel USB Gaming Headphones meant for PC. This manual is meant to guide you through the functionality of the wired over-ear gaming headphones. IM10000 virtual series gaming headphones is the essential headphones that focuses on what truly matters: **Balanced and Virtual Surround sound** for all your gaming and music needs. We strongly advise that this manual is thoroughly read before use, and referred to in times of difficulty, so that you can always be easily guided towards the shores of gaming bliss.

Let's attack!

Technical Specifications:

Model	Immortal IM10000
Speaker driver	50mmx2
Speaker Sensitivity	113dBfs/30dB at 1KHz
Speaker Impedance	32±15% Ω
Connectivity	USB
LED type	Breathing RGB LEDs
MIC Sensitivity	48±3 dB
MIC Impedance	2.2KΩ
MIC System	Omnidirectional MIC
Cord length	2m
Cable type	Braided
Shape	Round
7.1 application	7.1 Surround Sound

Quick Start:

- Plug your headset into computer's USB SLOT (Any 2.0/3.0)
- Adjust the volume before listening
- Adjust the microphone direction

To watch the tutorial video please scan the code



Remote Controller:

- 1- Volume +
- 2- Volume -
- 3- Mic Mute-On / Off
- 4- LED On / Off

Dolby Atmos® Introduction

Dolby Atmos™ immerses you in the latest gaming audio with three-dimensional precision, surrounding you with crisp sound.

Dolby Atmos® Minimum Requirements

- Windows Operating system: Windows 10 version 18362.0 or higher
- Architecture: amd
- 1x Free Microsoft store account

List of Games which have Dolby Source Engine

Visit the URL: <https://www.dolby.com/experience/games/>

OR

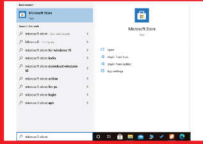
Scan QR Code*



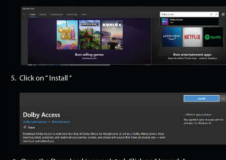
How to Activate Dolby Atmos®

Download Dolby Access app for free from the Microsoft Store

1. Click On Windows Start
2. Search "Microsoft Store" and Click on Microsoft store icon



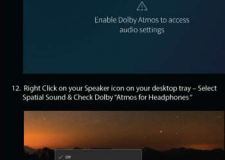
3. Once Microsoft store is opened you can login with your existing ID or create new account (Do remember this Login ID and Password for future login)
4. Once you are logged in - Search Dolby Access



7. Plug in your boAt IM10000 headset
8. Skip the Demo Content (if any)
9. Go to "Product" - Select "Headphone Icon" and Click on Setup



11. Click on "Settings Tab" - If you see this screen please enable Dolby from your system please check step no. 12)
12. Right Click on your Speaker icon on your desktop tray - Select Spatial Sound & Check Dolby Atmos for headphones*



13. It's Done - Go to Dolby Access "Settings" Tab and check



About boAt Plugin Labz

IM10000 series comes with a software "boAt Plugin Labz" If your system doesn't support Dolby Atmos® then you can use boAt Plugin Labz to create 7.1 virtual surround sound for your game.

System Requirements:
Windows PC (7/8/8.1/10) (32bit & 64 bit)

About boAt Plugin Labz

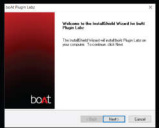
Scan and download



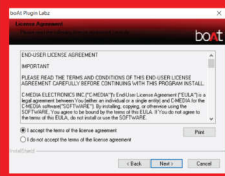
Installation

(Note: Keep the headset plugged into computer's USB SLOT while installing)

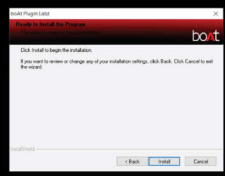
- Step 1. Click "Next" to start installation



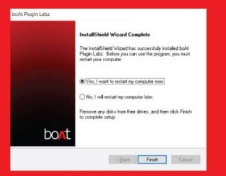
- Step 2. Click "I" accept the terms of the license agreement and then Next



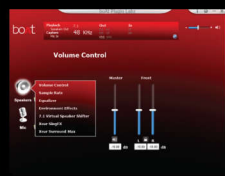
- Step 3. Click "Install" to begin installation



- Step 4. Click "Finish" to restart the computer before you begin using the program



Speaker Customization:



Microphone Customization:



7.1 Customization:



Dual Microphone Functionality

- Primary - Detachable Boom Mic
- Secondary - Pivoting Mic
- Auto Switch - Whenever Boom Mic is removed, Secondary Mic will be activated automatically (vice versa)

Safety Guidelines:

- In order to achieve maximum safety while using boAt IM10000, we suggest following guidelines.
- If you have trouble operating the device and troubleshooting doesn't work, unplug the device and contact boAt customer support.
- Do not try to fit the device by yourself anytime (doing so will void your warranty)
- Keep the device away from liquid, humidity and moisture.
- Listening to excessively loud volumes over extended periods of time can damage your hearing. We recommend that you reduce the volume to a comfortable level when listening for prolonged periods of time. Take good care of your hearing.

Maintenance and Use:

The boAt IM10000 requires minimum maintenance to keep it in the best condition. Once a month we recommend you unplug the device from the computer and clean it using a soft cloth or cotton swab.